



GREASE INTERCEPTOR

SPECIFICATION SHEET

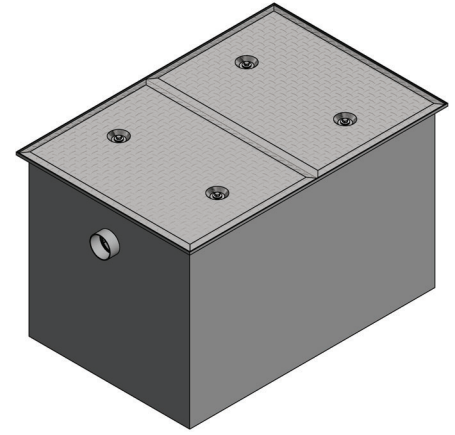
Meets ASME Standard A112.14.3

TAG

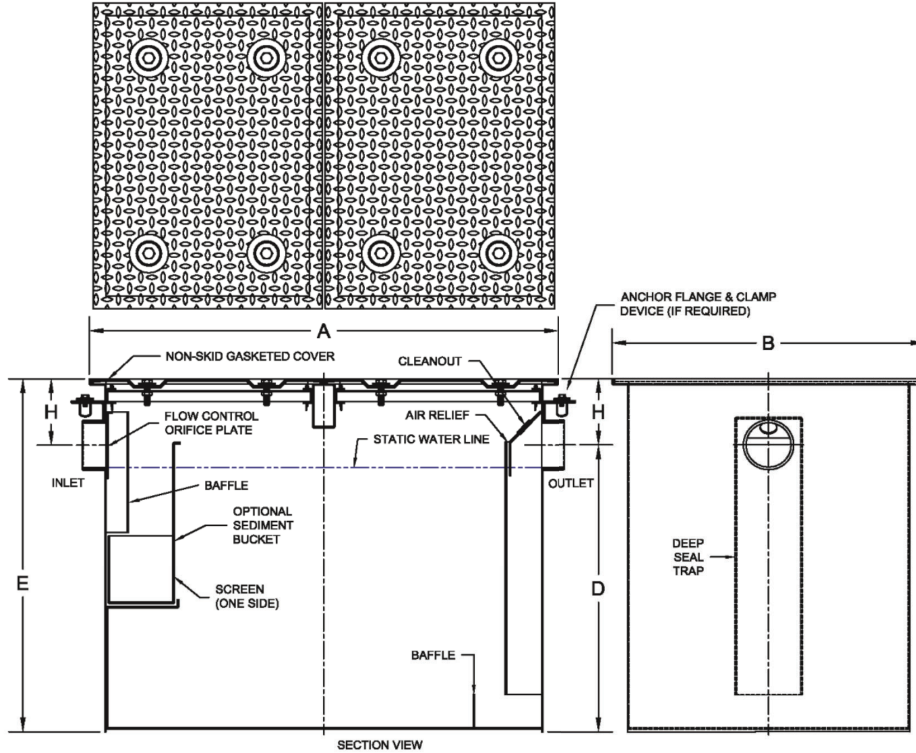
Mechanical

5200 Large Capacity Grease Interceptor

DIMENSIONS ARE SUBJECT TO MANUFACTURERS TOLERANCE AND CHANGE WITHOUT NOTICE WE CAN ASSUME NO RESPONSIBILITY FOR USE OF SUPERSEDED OR VOID DATA



5200-75-4NH



SECTION VIEW

Size / GPM [L]	Pipe Size	Interceptor Capacity		Dimensions (Inches)					No. of Lids	Wt. Lbs.
		Lbs. [kg]	Gallons [L]	A	B	D	E	H		
75 [284]	4" [102]	150 [68]	106 [401]	42 [1069]	28 [711]	26 [660]	32 [813]	6 [152]	2	549 [249]
100 [378]	4" [102]	200 [91]	193 [731]	55 [1397]	37 [940]	26 [660]	34 [864]	8 [203]	2	638 [289]
125 [472]	4" [102]	250 [114]	227 [859]	58 [1473]	38 [965]	28 [711]	36 [914]	8 [203]	3	749 [340]
150 [567]	4" [102]	300 [136]	265 [1003]	61 [1549]	39 [991]	30 [762]	38 [965]	8 [203]	3	822 [373]
200 [756]	4" [102]	400 [182]	396 [1499]	70 [1778]	44 [1118]	34 [864]	44 [1118]	10 [254]	6	1267 [575]
250 [945]	4" [102]	500 [227]	501 [1896]	75 [1905]	46 [1168]	38 [965]	48 [1219]	10 [254]	6	1951 [885]
300 [1134]	4" [102]	600 [272]	580 [2195]	77 [1956]	49 [1245]	40 [1016]	52 [1321]	12 [305]	6	2096 [951]
400 [1512]	6" [152]	800 [366]	805 [3047]	84 [2134]	56 [1422]	44 [1118]	58 [1473]	14 [356]	6	2780 [1261]
500 [1890]	6" [152]	1000 [454]	1172 [4437]	92 [2337]	61 [1549]	54 [1372]	68 [1727]	14 [356]	6	2994 [1358]

•	Number	GPM [LPM]	Pipe Size
	5200-75	75 [284]	4" [102]
	5200-100	100 [378]	4" [102]
	5200-125	125 [472]	4" [102]
	5200-150	150 [567]	4" [102]
	5200-200	200 [756]	4" [102]
	5200-250	250 [945]	4" [102]
	5200-300	300 [1134]	4" [102]
	5200-400	400 [1512]	6" [152]
	5200-500	500 [1890]	6" [152]
Outlet Variations			
	NH	No-Hub	
	IPS	Threaded (FIP)	

Regularly Furnished: Large capacity acid resistant coated interior and exterior fabricated steel grease interceptor with internal air relief by-pass, pressure equalizing/ flow diffusing inlet baffle, fixed bottom outlet baffle, trap seal, gasketed non-skid secured cover complete with center tie down assembly and flow control.

Suffix Options		•
Suffix	Description	
24	Anchor Flange	
26	Anchor Flange w/ Clamp Device	
304	All Stainless Steel	
HD	Heavy Duty Reinforced Cover	
XT	Fixed Extension - Up tp 6" [152] Standard (Specify Height)	

⚠ WARNING: Cancer and Reproductive Harm - www.P65Warnings.ca.gov

Wade Specification Drainage Operation		116 Maple Street • Commerce, TX 75428			Ph: 800-638-9537	wadedrains.com
Drawing Number	W5200	Date	04-21-22	C.N. No.	Revision	