



OUTDOOR EQUIPMENT

SERVING THE FOOD INDUSTRY SINCE 1951

HEATED PATIO TABLE

Item: 43123

Model: PH-CN-1100-T



**KEEPING YOUR GUESTS WARM IN
ANY COLD DAYS AND NIGHTS WITH
OUR SLEEKED DESIGNED HEATED
PATIO TABLE**



WARRANTY
PARTS AND LABOR



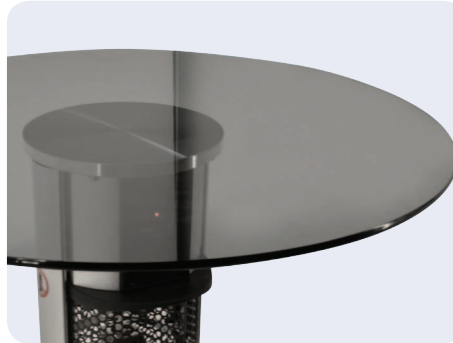
Authorized Dealer

OUTDOOR EQUIPMENT

HEATED PATIO TABLE



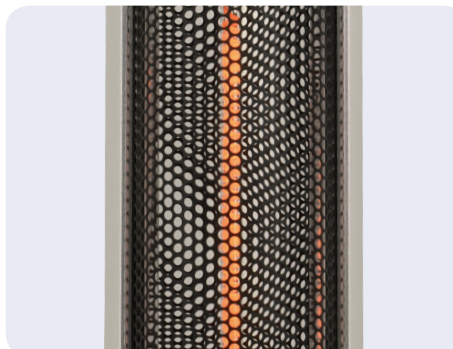
Control Panel



Tempered Glass Table

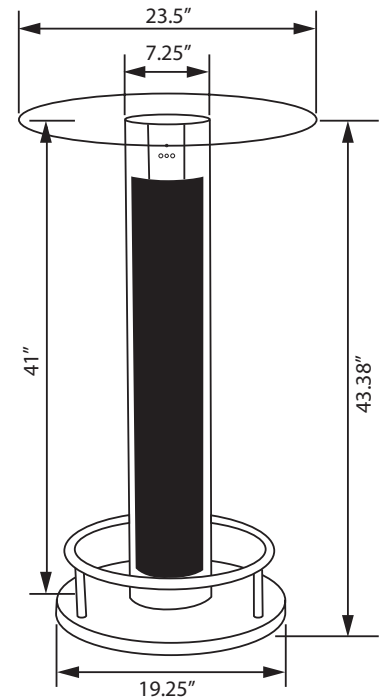


Remote Control



Carbon Fibre Heating Element

TECHNICAL DRAWING WITH DIMENSIONS

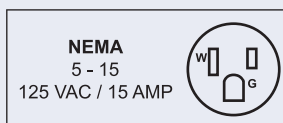


TECHNICAL SPECIFICATION

ITEM NUMBER	43123
MODEL	PH-CN-1100-T
TABLE SIZE	23.5" Diameter
POWER	1.5 kW
ELECTRICAL	120V / 60Hz / 1Ph
DIMENSIONS(DWH)	23.5" x 23.5" x 43.38" / 597 x 597 x 1101.6 mm
GROSS WEIGHT	17.7 kg./ 39 lbs
GROSS DIMENSIONS	5" x 27" x 26" / 127 x 686 x 660 mm

FEATURES

- Heated table with remote control
- Anodized extruded aluminium alloy frame and control box
- High-efficiency Carbon Fibre Heating Element
- Power: 1500W
- 2-meter power cord
- Tempered Glass Table
- Stainless steel base
- 360-degree tip-over Safety Switch
- IP55 Approved



OMCAN INC.

Telephone: 1-800-465-0234
 Fax: (905) 607-0234
 Email: sales@omcan.com
 Website: www.omcan.com



Follow us to keep up to date with the latest news and offers

