

ONLY FROM

nemco[®] | FOOD
EQUIPMENT

Heat Shelf

The classy shelf warmer that's robust enough for the kitchen, yet attractive enough for the front of the house.



Buy once. Buy the original.
Always look for this mark of quality





Superior Heating Performance, with A Few Style Points

Conscientiously combining breakthrough heating technology with several aesthetic design features, Nemco offers you a shelf warming unit that can perform virtually anywhere in your establishment.

Say Goodbye to Cold Spots

When the market was craving a shelf merchandiser that could hold foods at optimum temperatures for longer than 30 minutes, Nemco solved the challenge with a completely unique heating system.

Applying the same technology to the heat shelf, Nemco offers you a warmer that heats up to as high as 220° F and, more importantly, delivers unmatched heat uniformity that virtually eliminates temperature drops across the entire surface.

Warm Up Anywhere

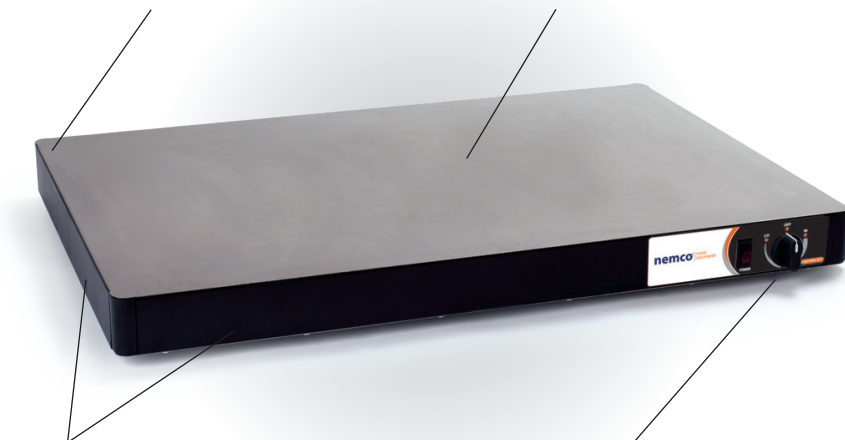
Thinking beyond the kitchen, Nemco has designed the heat shelf with several features that dress it up for the front of the house, including rounded corners, a clean and simple control panel and black powder-coated sides—standard!

Pull No Punches

Don't let the stylized appearance mislead you. Built entirely with commercial-grade stainless steel and engineered with simplicity to minimize maintenance issues, the heat shelf can stand up to the busiest kitchens and wait stations for years.

Rounded corners smooth out the shelf's appearance and remove edges that can catch clothing

Stainless steel surface heats evenly and is easy to wipe clean



Sides come standard with a black powder coating

Ergonomic control dial sets variable temperatures up to 220° F

Suggested Uses

The versatility of Nemco's heat shelf makes it useful for all sorts of applications, including kitchen wait stations, pass-through areas, serving lines, buffets and more. It can find a place in the back or front of the house and is especially useful where overhead radiant warmers are not available or not quite enough to achieve those slightly higher temperatures or longer hold times. Use the heat shelf to hold plated foods or boxed to-go orders. Or hold a serving pan on its stainless steel surface and maximize the power of conduction heat.

General Specifications

Model	Width*/Description	Watts
6301-18	18" Black	250
6301-18-SS	18" Stainless	250
6301-24	24" Black	350
6301-24-SS	24" Stainless	350
6301-30	30" Black	425
6301-30-SS	30" Stainless	425
6301-36	36" Black	500
6301-36-SS	36" Stainless	500
6301-48	48" Black	700
6301-48-SS	48" Stainless	700
6301-60	60" Black	850
6301-60-SS	60" Stainless	850
6301-72	72" Black	1000
6301-72-SS	72" Stainless	1000

**All heat shelves are 20" D x 2.25" H*

Note: 18" through 36" models will be supplied with 1/2" feet; 48" through 72" models will be supplied with 4" legs to meet NSF Standard 4.

Replacement parts are available through Nemco's 24-hour Zip Program.

Nemco reserves the right to make design, specification or model changes without notice.



nemco | FOOD EQUIPMENT

Physical Address: Corporate HQ
301 Meuse Argonne | Hicksville, OH 43526
800.782.6761 • 419.542.7751 • f: 419.542.6690

Mailing Address:
PO Box 305 | Hicksville, OH 43526

Nemco West Distribution Center/Test Kitchen
4300 E Magnolia Street | Phoenix, AZ 85034

NemcoFoodEquip.com



Printed 5/21. Printed in the USA.